



# Sonoma County ACEs Connection

## MOBILIZING ACTION FOR RESILIENT SONOMA

### OUR NETWORK

*“We bring the community together to prevent, heal, and treat ACEs while promoting resiliency.”*

Sonoma County ACEs Connection became a community coalition in March 2016, adhering to the traditional definition of a coalition with a defined set of relationships among a group of member organizations and individuals that commit to a collective goal and shared decision-making. Members include representatives from many sectors including education, law enforcement, government agencies, media, health, and human service non-profits. In June 2016, the coalition agreed to adopt the MARC grant goals as the coalition’s goals.

### MARC OBJECTIVES

- A** Formalize and strengthen Sonoma County ACEs Connection infrastructure.
- B** Build community capacity to understand and address ACEs and foster resilience.
- C** Leverage existing community engagement and development activities to align with and promote the ACEs prevention and trauma informed frameworks.

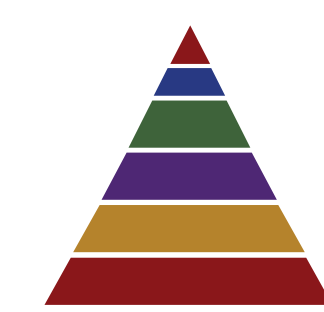
### OUR KEY LEARNINGS



Backbone staff ensures coordination and collaboration.



A cross sector network can raise awareness of a broad section of the community—ours is now taking first action steps towards changing practices and policies.



The ACE pyramid needs to include a reframe around being informed of historical trauma/racism, coping, and adaptive behaviors that relieves individuals of blame or shame, while acknowledging community level adversity.

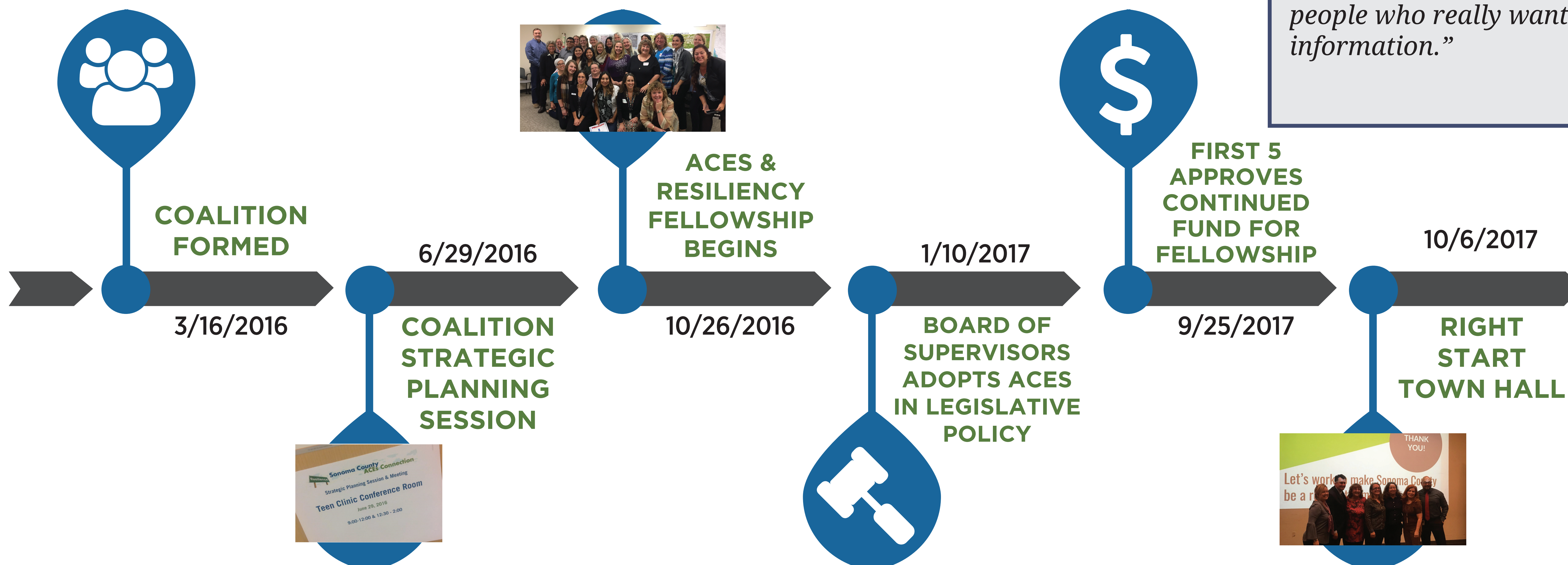
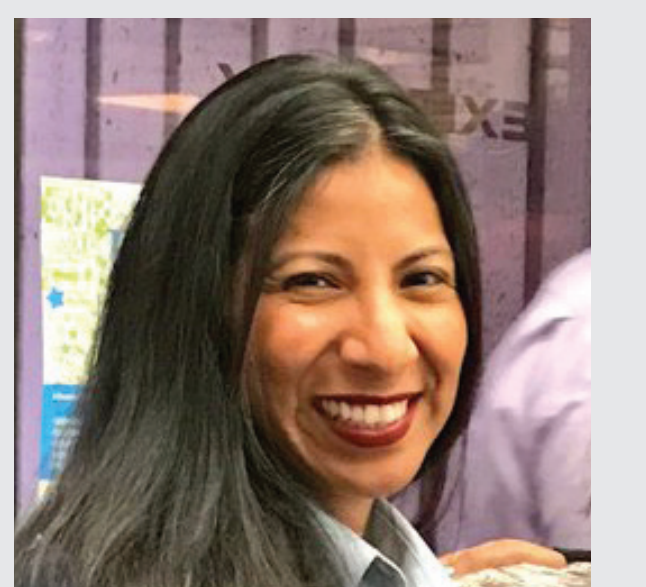


*“Not everybody embraces a compassionate approach to dealing with people, but the hard-to-argue-with brain science can help overcome that resistance.”*

-Detective Tim Raymond  
2016-17 ACEs Fellow

*“You feel alone doing this work, like you’re starting from scratch. But here, I felt like I had some reinforcement—people who really want to understand and share this information.”*

-Isabel Lopez  
2016-17 ACEs Fellow



### CONTACT US



Holly White-Wolfe, MBA

[hwhitewolfe@schsd.org](mailto:hwhitewolfe@schsd.org)

707.565.5266