

# Preventing Early Adversity through Policies, Norms, and Programs



Melissa T. Merrick, PhD

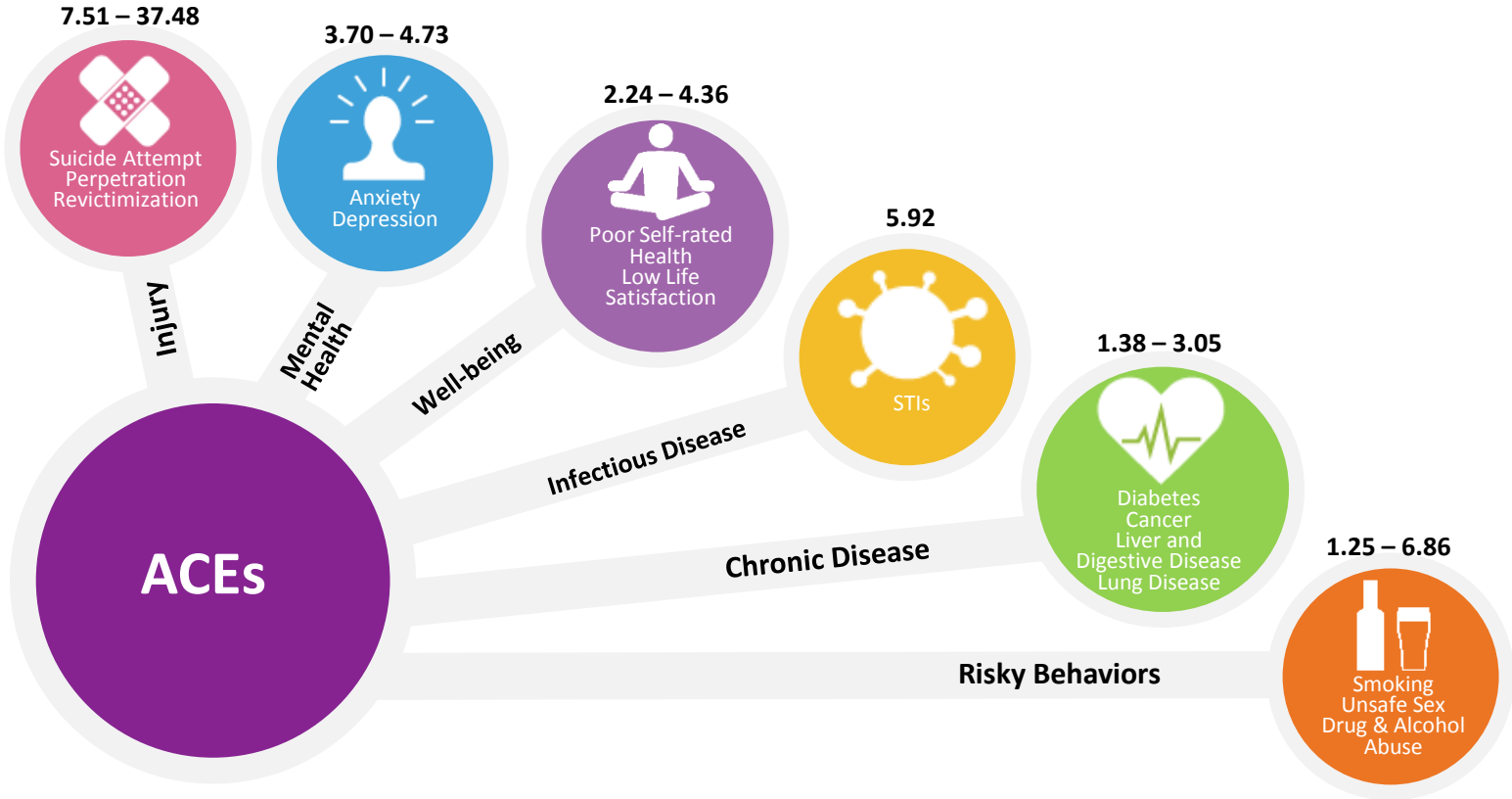
MARC Brown Bag Webinar Series - September 7, 2017



..... *the issue* .....

**1 BILLION**  
**CHILDREN** EXPERIENCE  
VIOLENCE ANNUALLY

# Early Adversity has Lasting Impacts on Health



# ACEs can have lasting effects on....



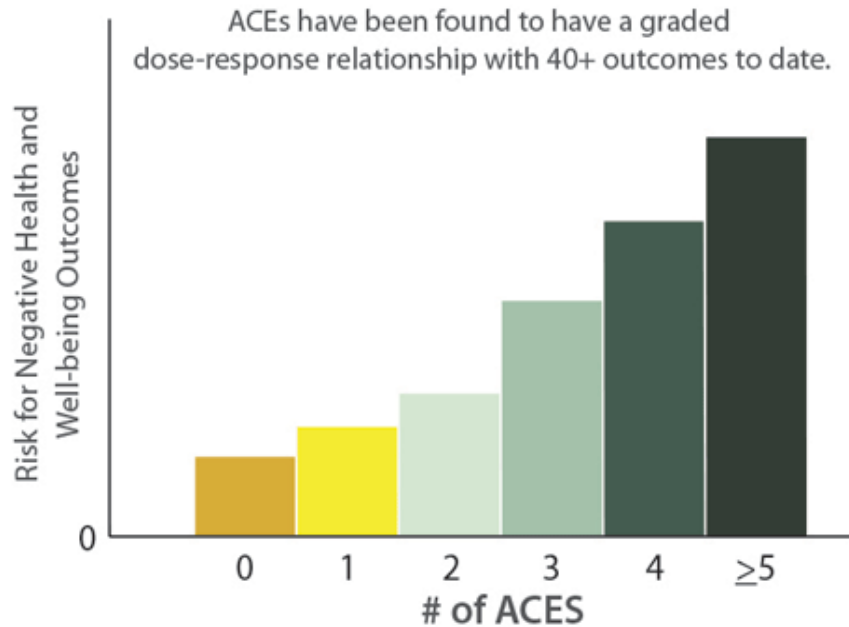
Health (obesity, diabetes, depression, suicide attempts, STDs, heart disease, cancer, stroke, COPD, broken bones)



Behaviors (smoking, alcoholism, drug use)



Life Potential (graduation rates, academic achievement, lost time from work)



\*This pattern holds for the 40+ outcomes, but the exact risk values vary depending on the outcome.

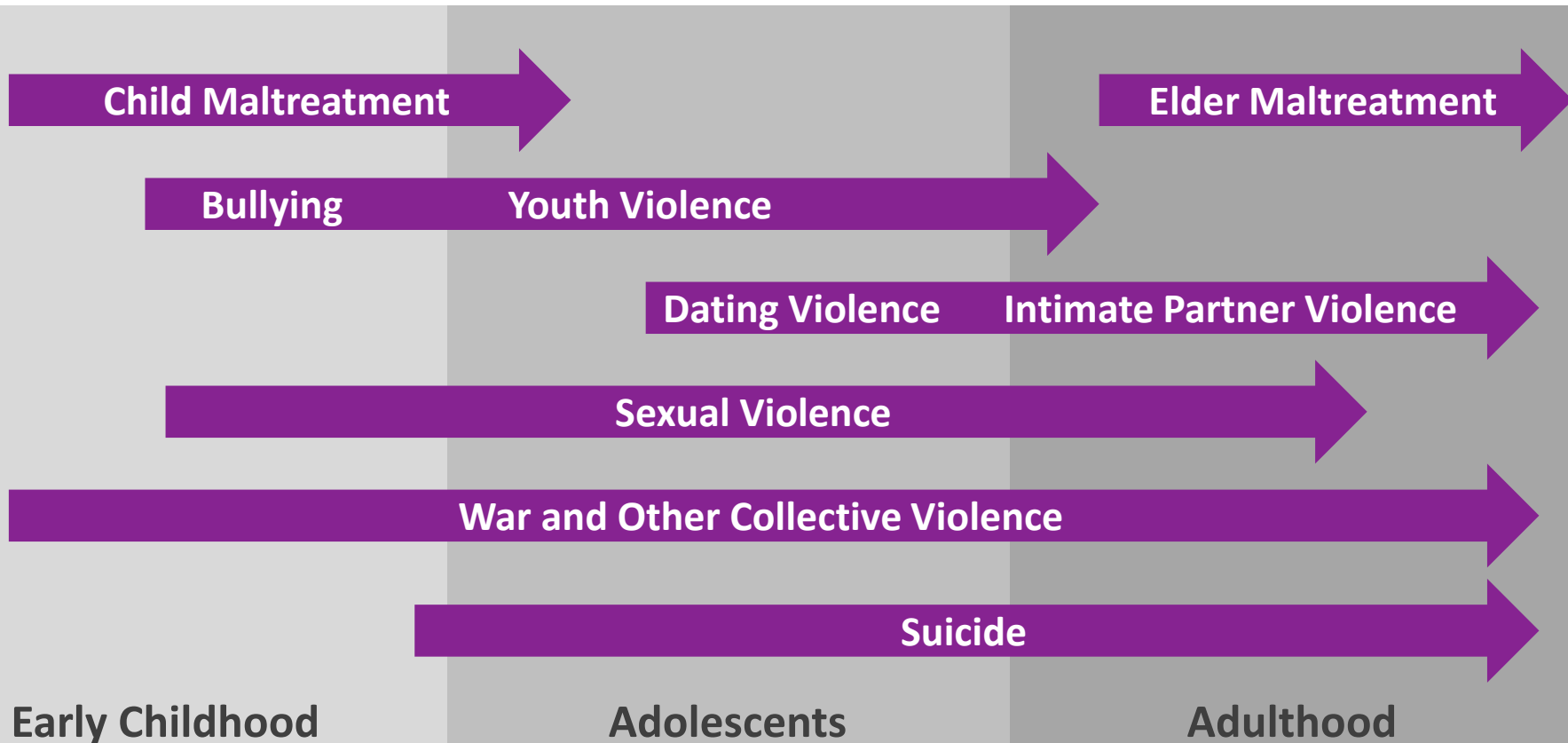
# Leading Causes of Death in the U.S. in 2014

1. Heart disease
2. Cancer
3. Chronic lower respiratory diseases
4. Unintentional injuries (accidents)
5. Stroke
6. Alzheimer's disease
7. Diabetes
8. Influenza and Pneumonia
9. Nephritis, Nephrotic Syndrome, and Nephrosis (Kidney disease)
10. Intentional self-harm (suicide)

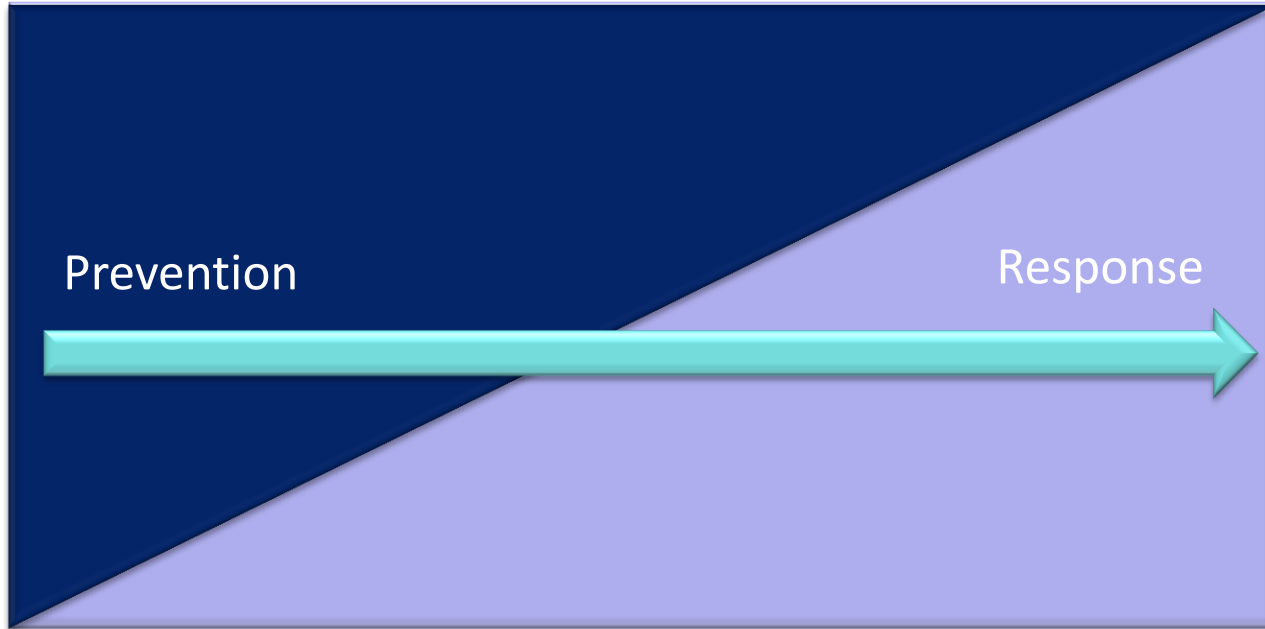
# Leading Causes of Death in the U.S. in 2014

1. Heart disease
2. Cancer
3. Chronic lower respiratory diseases
4. Unintentional injuries (accidents)
5. Stroke
6. Alzheimer's disease
7. Diabetes
8. Influenza and Pneumonia
9. Nephritis, Nephrotic Syndrome, and Nephrosis (Kidney disease)
10. Intentional self-harm (suicide)

# Violence Across the Lifespan



# Role of Public Health in Violence Prevention



**ROLE OF CRIMINAL JUSTICE, CHILD WELFARE, SOCIAL SERVICES**





Assuring safe, stable, nurturing  
relationships and environments for all children



Safe



Stable

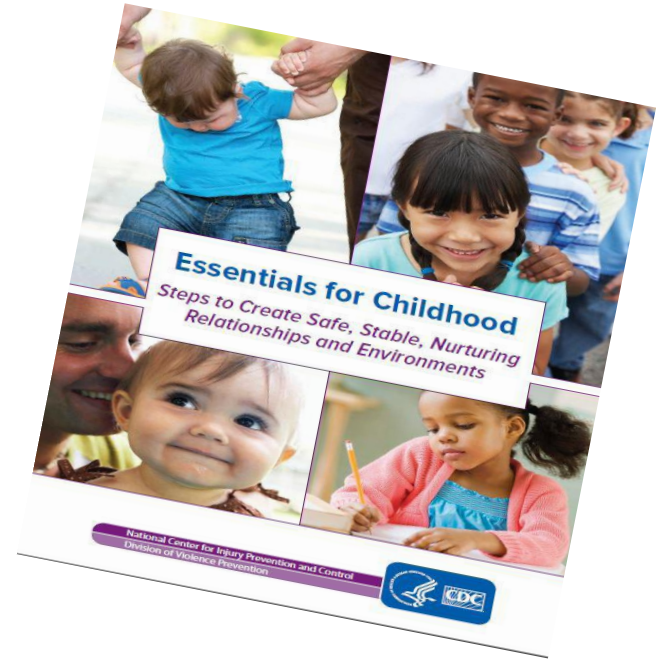


Nurturing



## ➤ CDC's Essentials for Childhood Framework

- Raise Awareness and Commitment to Support Safe, Stable, Nurturing Relationships and Environments
- Use Data to Inform Action
- Create the Context for Healthy Children and Families through Norms Change and Programs
- Create the Context for Healthy Children and Families through Policies





- **CDC Funding 5 State Health Departments**
  - California
  - Colorado
  - Massachusetts
  - North Carolina
  - Washington
  
- **31 Self Supported States - participating in initiative in some way**
  - Training/technical assistance and meetings also available to self supported states



# GOAL 1: RAISE AWARENESS AND COMMITMENT

# The Raising of America

From the producers of *Unnatural Causes*

## The Raising of America



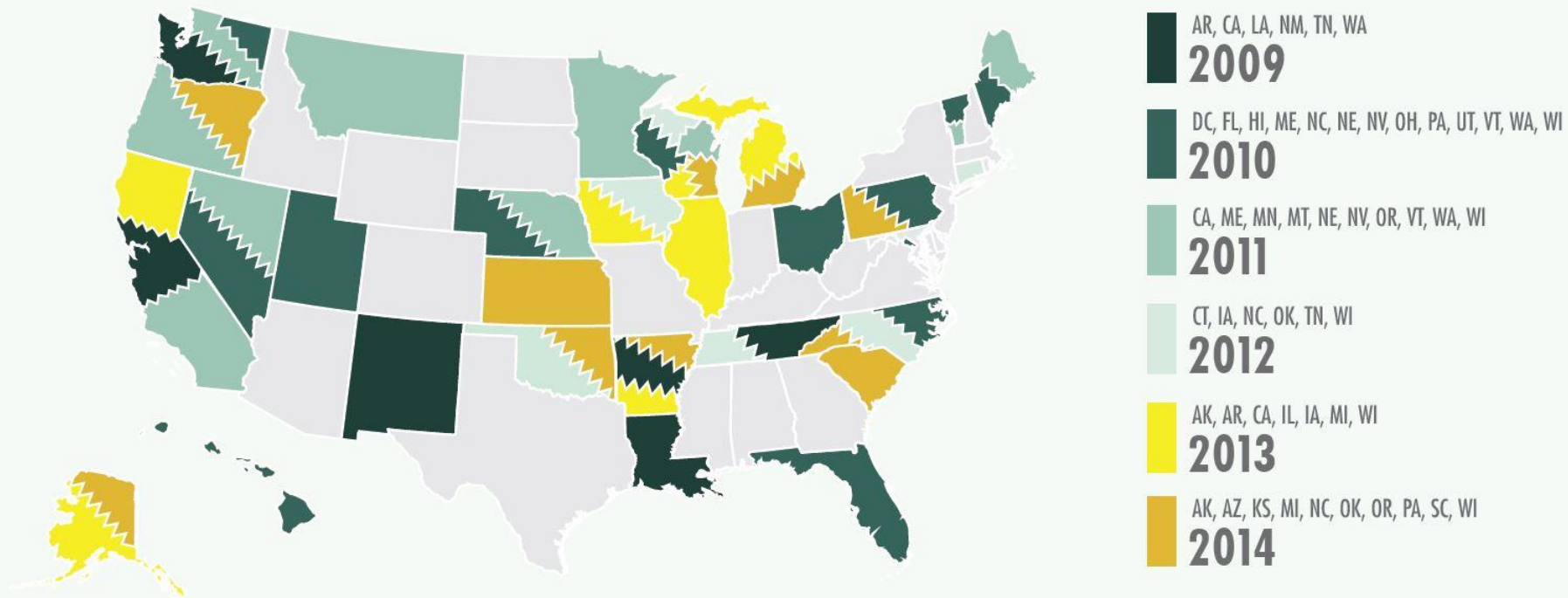
Early Childhood  
and the Future  
of Our Nation

- ***Raising*** explores how a strong start for all our kids can lead to a healthier, stronger, and more equitable America
- **Components:**
  - Six-part documentary series
  - National public engagement campaign
  - Companion website



**GOAL 2: USE DATA TO INFORM  
PREVENTION ACTION**

# 39+ States Have Included the ACE Module on Their BRFSS





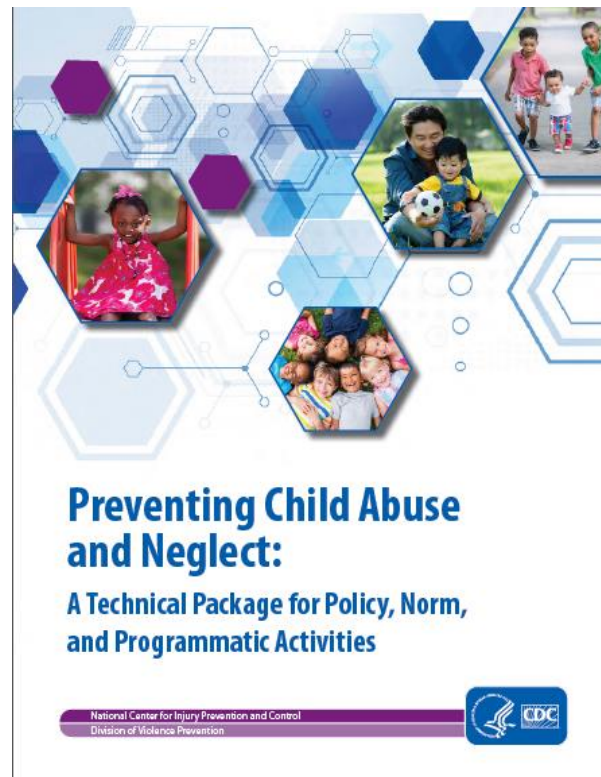


**GOALS 3 & 4: CREATE THE CONTEXT FOR HEALTHY CHILDREN AND FAMILIES THROUGH NORMS CHANGE, PROGRAMS, & POLICIES**



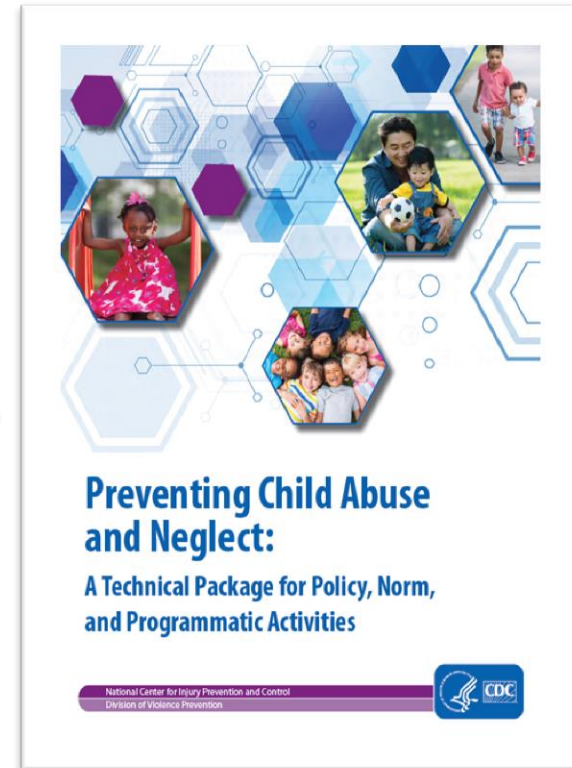
# Technical Packages

Select group of strategies with a focus on **PREVENTING** child abuse & neglect from happening in the first place as well as approaches to **LESSEN** the immediate and long-term harms of child abuse & neglect.



<http://www.cdc.gov/violenceprevention/pdf/can-prevention-technical-package.pdf>

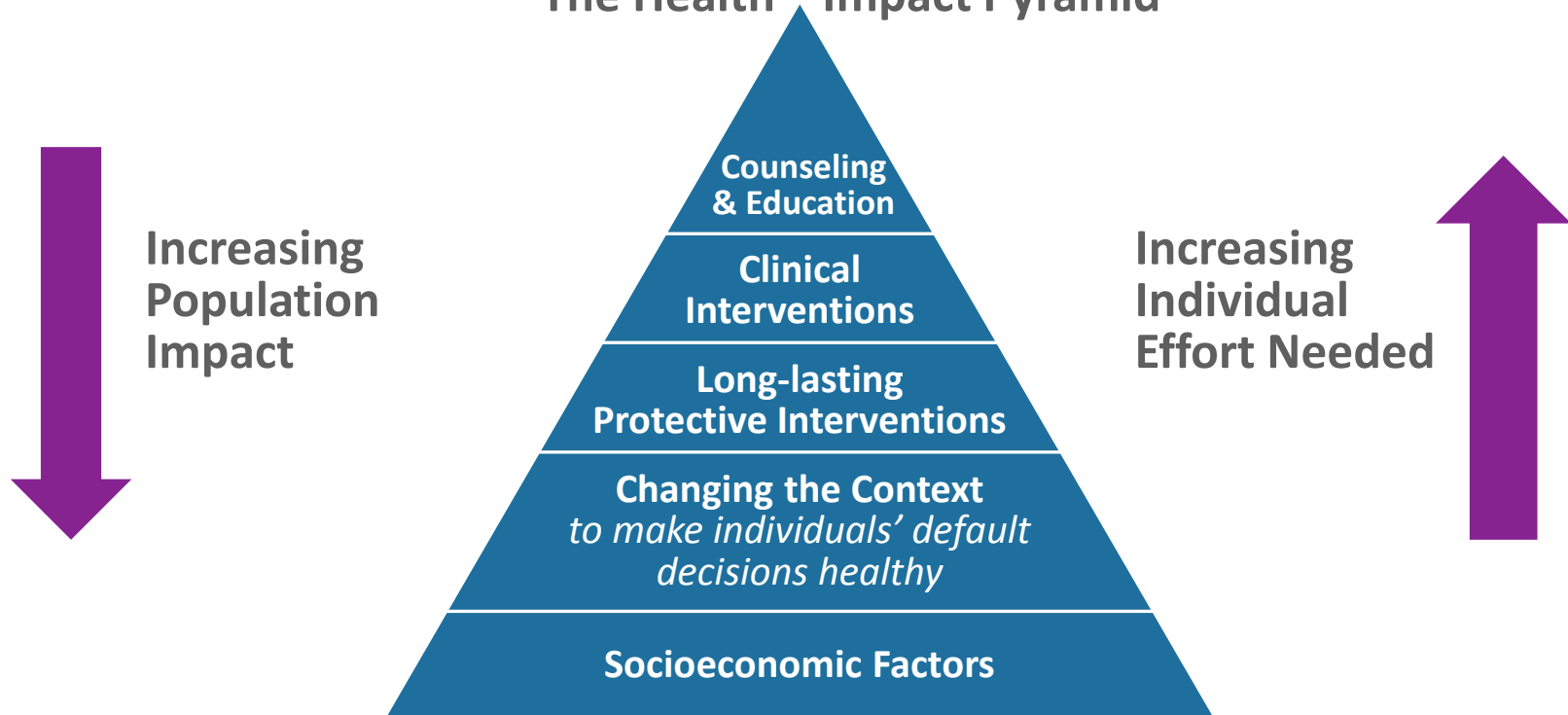
# Technical Package Development



**Preventing early adversity  
requires understanding why  
some children and families  
are at greater risk than others.**

# Prioritize Environmental Change

The Health Impact Pyramid



# 5 Strategies to Prevent Child Abuse & Neglect



Change social norms to support parents and positive parenting



Enhance parenting skills to promote healthy child development



Strengthen economic supports for families



Provide quality care and education early in life



Intervene to lessen harms and prevent future risk

# Evidence-Based Policy

- Policy development is a core function of public health
  - Conducting rigorous analyses to identify and report on strategies and policies that can protect health and prevent disease
  - Educating the public and stakeholders about these strategies
  - Implementing effective strategies and policies to maximize impact
- Policy development and education **are not** lobbying
  - Federal law prohibits the use of federal funds to lobby at the federal, state or local level
- Public Health's greatest achievements originated through policy efforts that maximize impact

# Strengthen Economic Supports to Families

- ❑ Strengthen household financial security
  - Child support payments
  - Tax credits
  - State nutrition assistance programs
  - Assisted housing mobility
  - Subsidized child care



# Strengthen Economic Supports to Families

## □ Family friendly work policies

- Livable wages
- Paid leave
- Flexible and consistent schedules





# Early Adversity Prevention is Strategic

Developing New  
Partnerships and  
Working Across Sectors



**Including:**  
Public Health, Government,  
Health Care Services,  
Social Services, Education,  
Businesses, Justice, Housing,  
Non-Governmental  
Organizations, Foundations,  
Media

***“One of the most powerful ways to change the world  
is to make it better for kids.”***

**-Jack Shonkoff**

**Melissa T. Merrick, PhD**  
[mmerrick@cdc.gov](mailto:mmerrick@cdc.gov)

Visit CDC's National Center for Injury Prevention and Control web site: [www.cdc.gov/ncipc](http://www.cdc.gov/ncipc)

Visit the Division of Violence Prevention's ACE web site: [www.cdc.gov/violenceprevention/acestudy](http://www.cdc.gov/violenceprevention/acestudy)

Visit our ACE Online Resources:  
[vetoviolence.cdc.gov/apps/phl/images/ACE\\_Accessible.pdf](http://vetoviolence.cdc.gov/apps/phl/images/ACE_Accessible.pdf)  
[vetoviolence.cdc.gov/apps/aces/](http://vetoviolence.cdc.gov/apps/aces/)

For more information, contact CDC  
1-800-CDC-INFO (232-4636)  
TTY: 1-888-232-6348 [www.cdc.gov](http://www.cdc.gov)

The findings and conclusions in this report are those of the authors and do not necessarily represent the official position of the Centers for Disease Control and Prevention.

