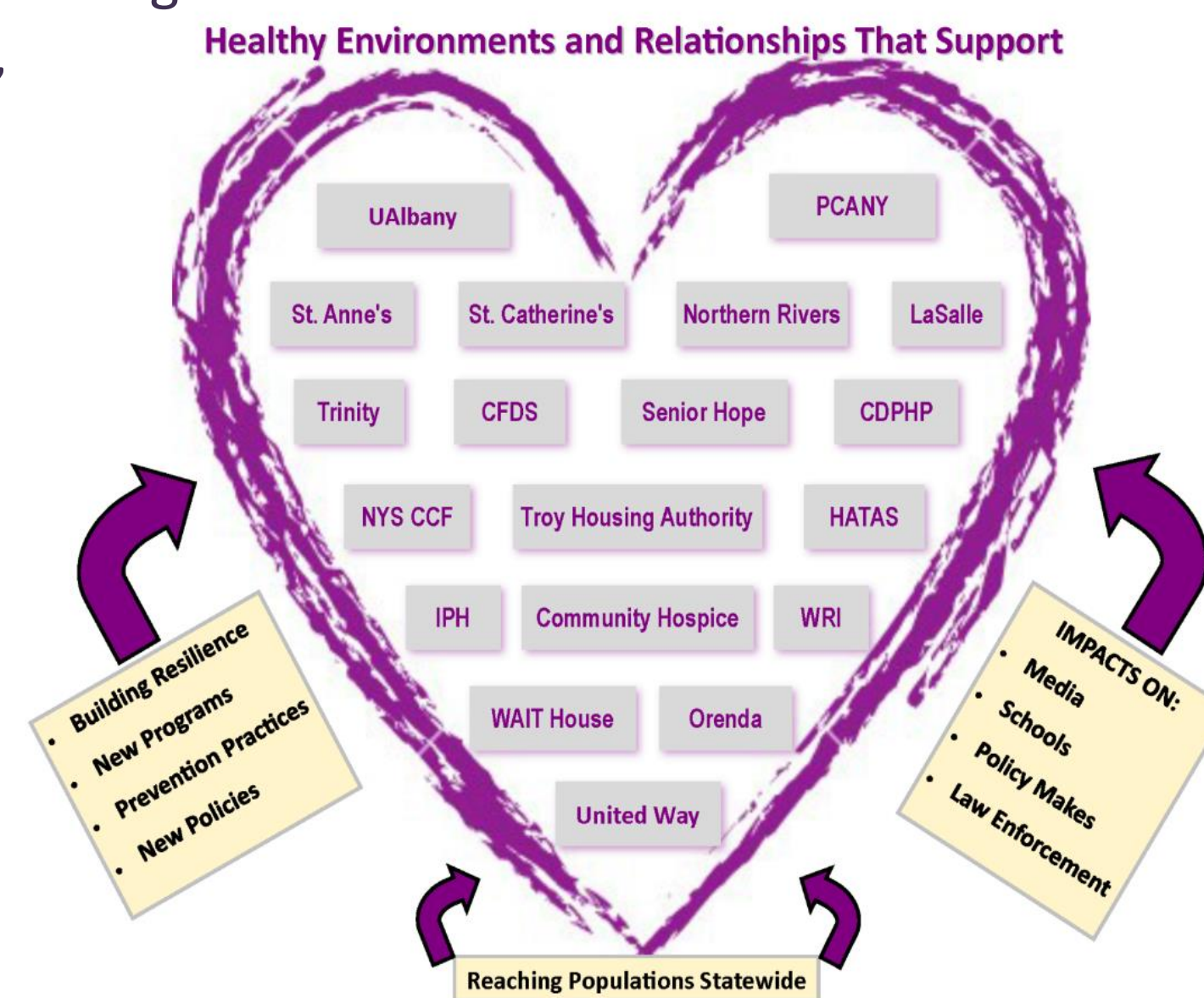


Healthy Environments and Relationships that Support (HEARTS): A Multi-systemic Collective Response to Adverse Childhood Experiences (ACE) The Albany, NY MARC Project

Network Description

- MARC Project led by University at Albany and La Salle School
- Addressing ACEs and building resilience in the state capital region area, including: Albany, Schenectady, Rensselaer, Schoharie, Saratoga
- Social service agencies serving as training, capacity building and systems change agents
- Impacting social service, health, education, and law enforcement sectors
- State-wide policy partnerships
- Indigenous community leaders, neighborhood peer supports
- Grassroots social movement



HEARTS/MARC

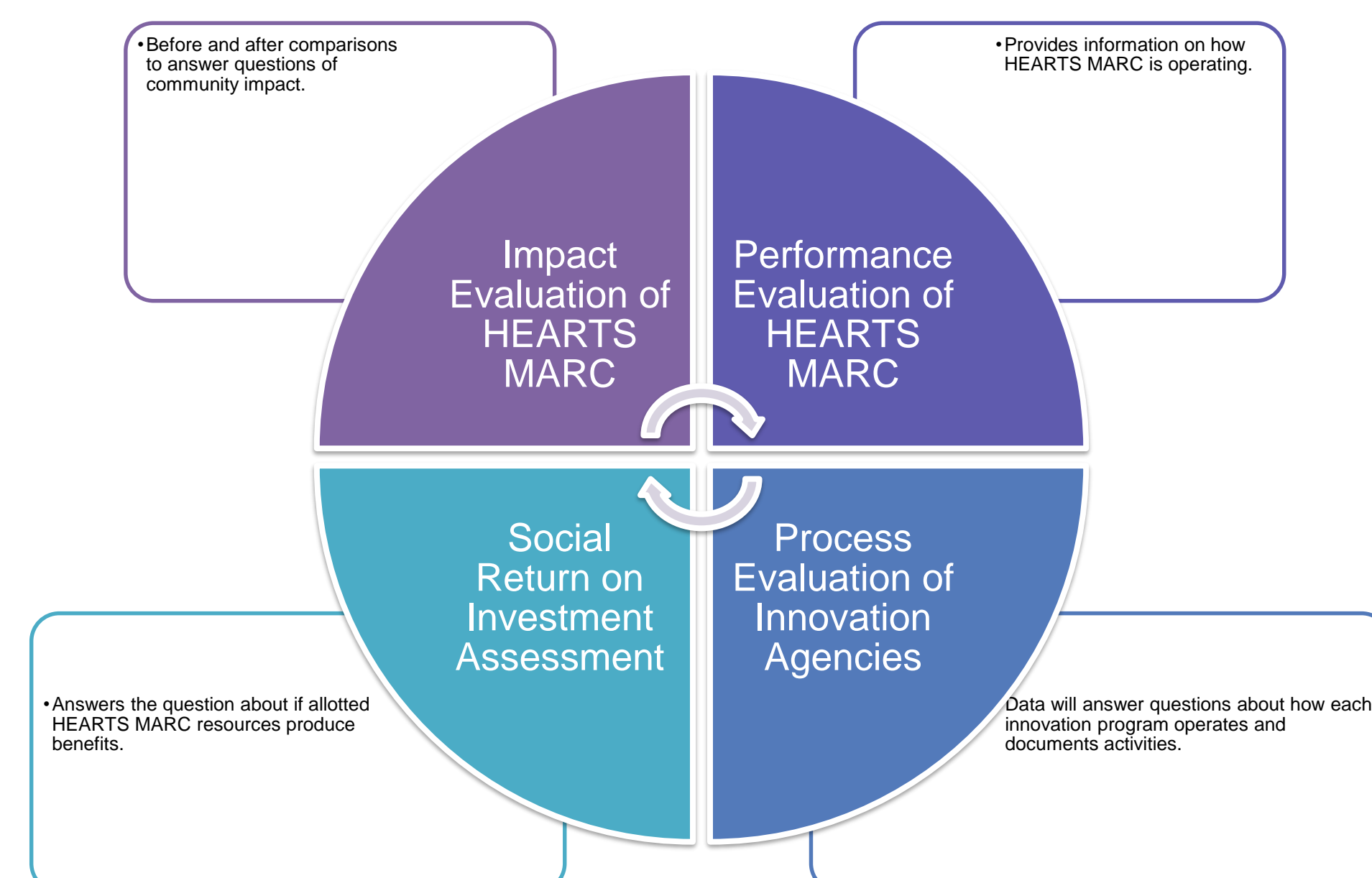
HEARTS/MARC aims to reduce ACEs and build resilience by supporting ACE-informed services, systems, and community wide impact through:

- Cross-sector collaboration
- Community capacity-building
- Social and policy advocacy
- Workforce development
- ACE/trauma-informed programs
- Evidence-supported interventions and emerging practices
- Grassroots level-engagement with indigenous leaders as policy entrepreneurs



How We Developed

- ACE Think Tank and Action Team meetings launched at UAlbany in 2007
- Promoted ACE-related information-sharing and networking for community members and agency leaders
- While ACE awareness increased, strong relationships forged and evolved over time



MARC Objectives



- Build an effective ACE resilience movement by expanding ACE screening, ACE-informed services, sector-specific networks beyond the region, new sector partnerships
- Create a learning and innovation exchange community through training and collaboration opportunities, data-based improvement indices, and continuous quality improvement with each partner agency
- Engage policy leaders through meetings and training, advance policy objectives through media outreach, and support policy entrepreneurs

Our Approach: Restorative Integral Support

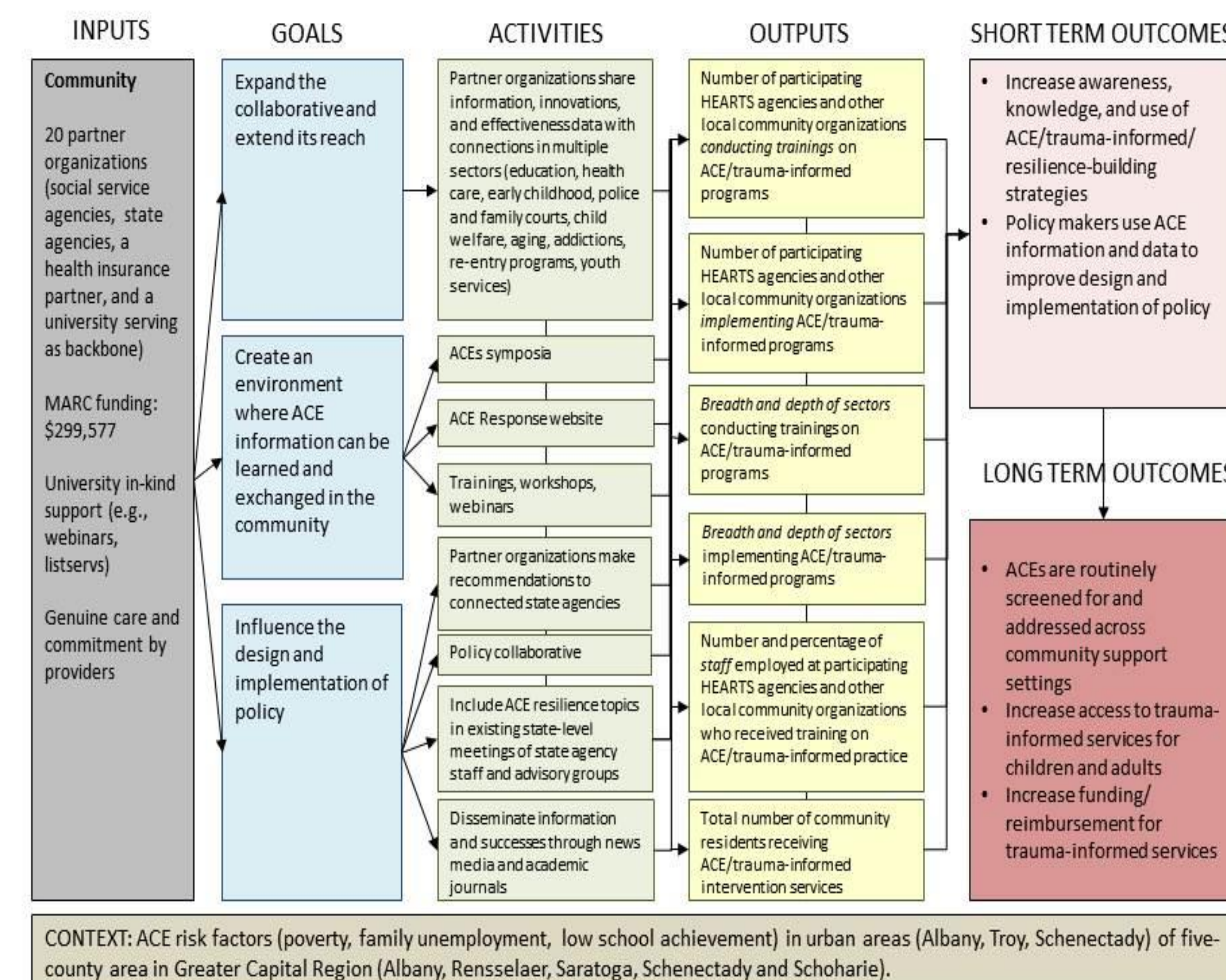
Restorative Integral Support (RIS): A comprehensive model for a whole person/whole agency/ whole systems/ whole community approach.

- Guides multi-faceted ACE response: leadership, policy change, integrated services, culture of health
- Emphasizes importance of social support for resilience and recovery, including provider self care.



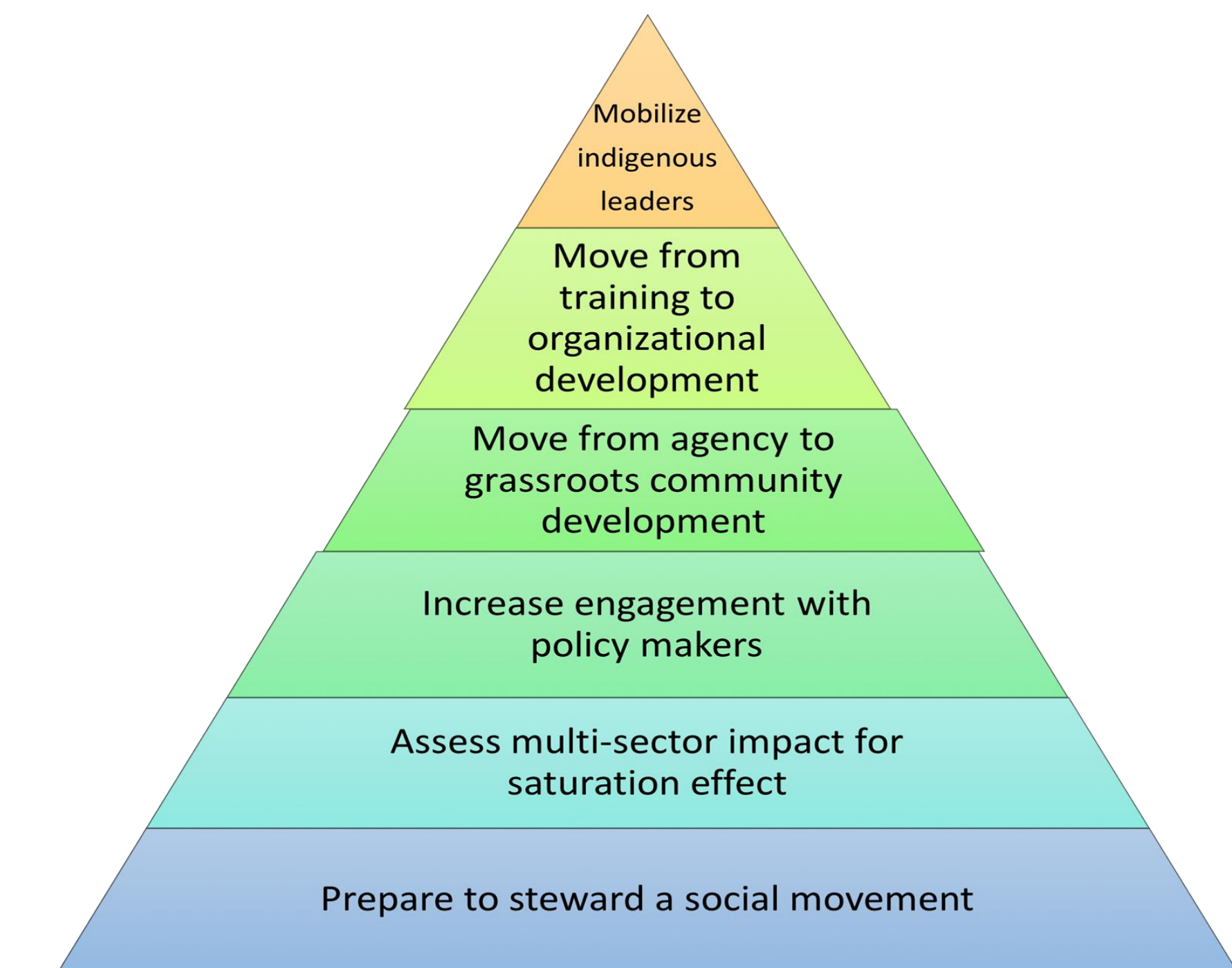
HEARTS/MARC Activities

GOAL: The HEARTS Initiative for ACE Response: Capital Region of NY seeks to raise awareness of ACE and mobilize professionals, paraprofessionals, and community members to promulgate practices and policies that prevent the occurrence and mitigate the impact of ACE in the NY Capital Region.



CONTEXT: ACE risk factors (poverty, family unemployment, low school achievement) in urban areas (Albany, Troy, Schenectady) of five-county area in Greater Capital Region (Albany, Rensselaer, Saratoga, Schenectady and Schoharie).

Key Learnings

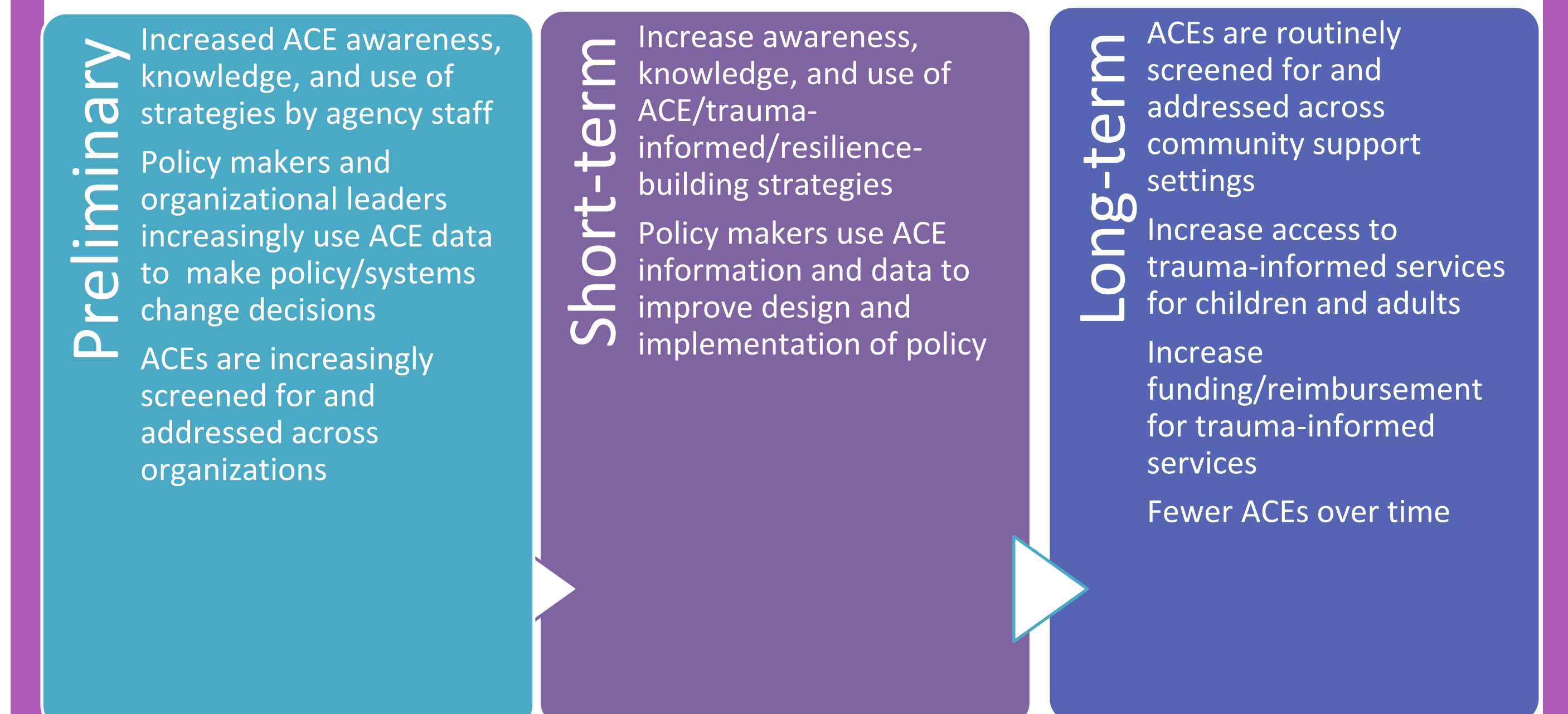


Developments

- NYS Council on Children & Families partnership for state agency collaboration and cross-system policy framework development
- Dissemination: e.g. Disability Services Toolkit: <http://marc.healthfederation.org/albanycapital-region-ny/trauma-informed-toolkit-providers-field-intellectual-developmental>
- Engaged county and city officials with new policy learning communities in development
- Information sharing and support for indigenous neighborhood leaders, e.g. Policy Entrepreneurs



Desired Outcomes



Contact Information

Heather Larkin, PhD and Katharine Briar-Lawson, PhD SCHOOL OF SOCIAL WELFARE
University at Albany, State University of New York · Phone (518) 442-3300

Dave Wallace, LCSW
La Salle School · Phone (581) 242-4731

